

Standard Preparation 1600 mm Meat&Fish Processing/ Washing Table

ITEM # _____
 MODEL # _____
 NAME # _____
 SIS # _____
 AIA # _____



132961 (TLC1600PN)

Meat and Fish Processing/
Washing Table with
perforated and removable
Plates, knife holder,
polythene cutting board,
drain, scraping hole and
upstand, 1600mm

Short Form Specification

Item No.

50mm high worktop in 304 AISI stainless steel, 1mm in thickness. Integral radiused rear upstand, h=100mm. All-round apron. Square section legs 40x40mm on 1" height-adjustable feet in 304 AISI stainless steel. Knife holder. N.I polythene cutting board 1130x225x25h mm on front and waste scraping hole.

Main Features

- Sturdiness, stability and reliability of table accurately tested.

Construction

- Table can be equipped with a mobile bin with lid for waste disposal (optional accessory).
- 50 mm worktop in 304 AISI stainless steel, 10/10 in thickness with upturned edges and reinforced waterproof underpanel, incorporates a layer of sound deadening materials.
- Square section legs and 40 mm height-adjustable feet in 304 AISI stainless steel.
- Unit features a 20 mm deep recessed surface, a polythene cutting board and a scraping hole on the front, perforated and sectionated removable tops, an easily removable GN liquid container and a knife holder. Knife sanitizer can be supplied as optional.

Optional Accessories

- Lower shelf for 1600mm tables PNC 855147 ☐ and sinks
- Set of 4 wheels (2 with brake) PNC 855150 ☐ d. 100mm for tables and sinks (total height on wheels= 993 mm)
- 3-sided underframe for PNC 855154 ☐ 1600mm tables
- Single drawer GN 1/1, 400mm PNC 855280 ☐
- Single drawer, 600mm PNC 855281 ☐
- Additional drawer, 600mm (to PNC 855295 ☐ set up a chest of 2, 3, 4 drawers)
- Additional drawer GN 1/1, PNC 855298 ☐ 400mm (to set up a chest of 2, 3, 4 drawers)
- Elbow operated mixer tap with PNC 855322 ☐ spout 3/4", single hole
- Elbow operated mixer tap with PNC 855323 ☐ short spout 3/4", single hole
- Foot operated mixer tap (hot PNC 855328 ☐ and cold) with spout 3/4"

APPROVAL: _____



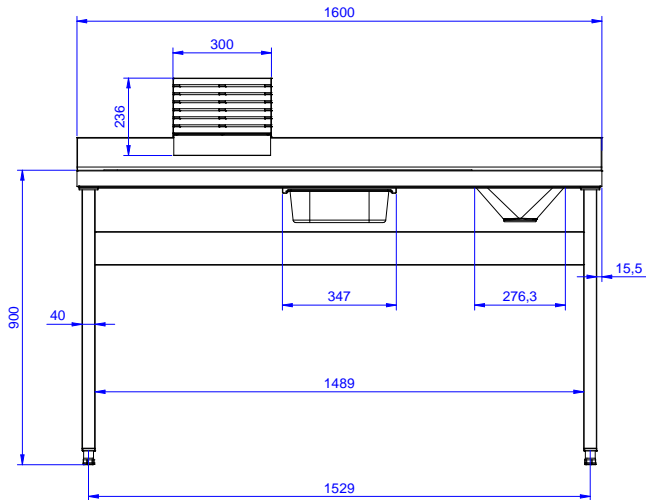
Electrolux
PROFESSIONAL

Standard Preparation 1600 mm Meat&Fish Processing/ Washing Table

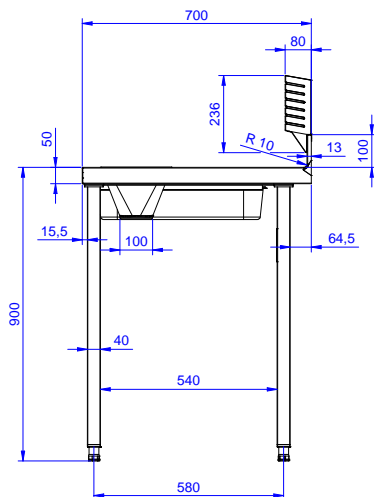
Key Information:

External dimensions, Width:	1600 mm
132961 (TLC1600PN)	
External dimensions, Depth:	700 mm
External dimensions, Height:	900 mm
Upstand Dimensions, Height:	100 mm
Upstand Dimensions, Depth:	13 mm
Upstand Dimensions, Radius:	R=10
Bowls number	1
Bowl dimensions	1070x320xH180
Worktop thickness:	50 mm
Net weight:	60 kg

Front

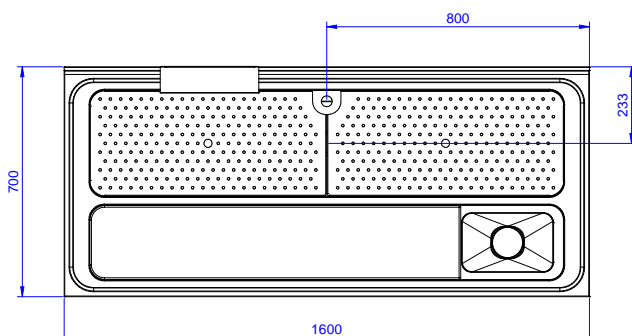


Side



D = Drain

Top



Standard Preparation
1600 mm Meat&Fish Processing/Washing Table

The company reserves the right to make modifications to the products without prior notice. All information correct at time of printing.

2026.01.05